



# **The Monitoring Mechanism Decision (280/2004/EC) and the Implementing Decision (2005/166/EC)**

*Geneva, 24<sup>th</sup> of June 2010*

Dr. Delano R. Verwey  
European Commission, DG Climate Action  
Unit A3 – Monitoring, Reporting and Verification

- ★ Overall framework
- ★ Annual reporting (actual emissions)
- ★ Biennial reporting (projections)
- ★ Steps forward



# The EU and the Kyoto Protocol

- EU-15 have a reduction target under the Kyoto Protocol of 8%
- Burden Sharing agreement: agreement to share the reduction target among the 15 Member States (MS)  
(Council Decision 2002/358/EC)
- 10 new MS have individual reduction targets of 8%  
(6% Poland and Hungary, Cyprus non-Annex I country)
- Member States report to the UNFCCC
- European Union reports to the UNFCCC

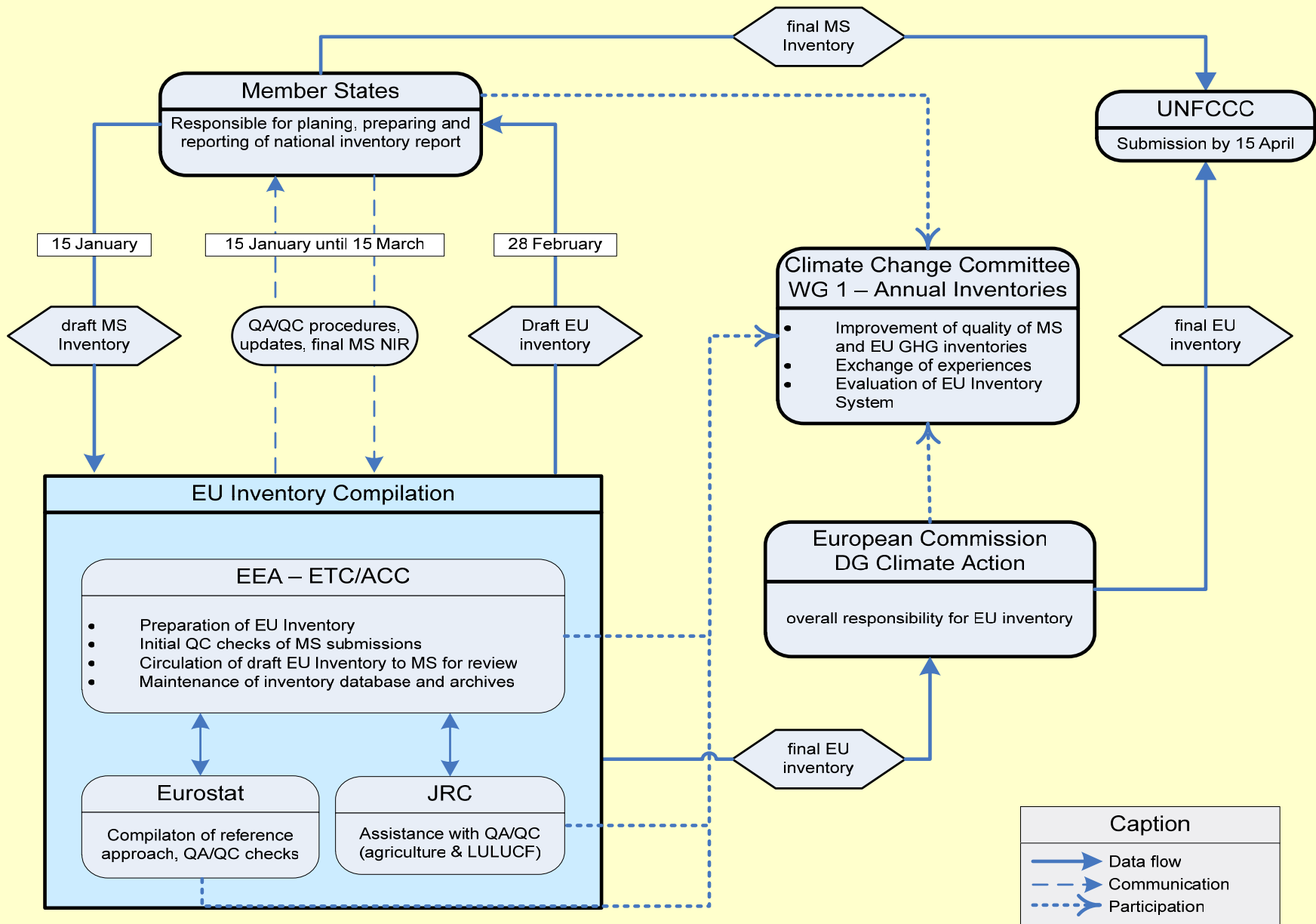


# The basis for the Monitoring System

- Marrakech Accords ( i.e., Decisions 20-24)
- Kyoto Protocol (i.e., Articles 5, 7, 8)
- IPCC Good Practice Guidelines
- UNFCCC guidelines
- EU legal basis
  - DECISION No 280/2004/EC OF THE EUROPEAN PARLIAMENT AND OF THE COUNCIL of 11 February 2004 concerning a mechanism for monitoring Community greenhouse gas emissions and for implementing the Kyoto Protocol
  - COMMISSION DECISION of 10 February 2005 laying down rules implementing Decision No.280/2004/EC of the European Parliament and of the Council concerning a mechanism for monitoring Community greenhouse gas emissions and for implementing the Kyoto Protocol (2005/166/EC)

- Annual assessment of the progress of the EU and its Member States (MS) (UNFCCC and the Kyoto Protocol)
- Biennial assessment of *projected progress* of the EU and its MS towards fulfilling their Kyoto commitments
- Annual progress evaluation report to the European Parliament and the Council:
  - projected emissions and removals
  - policies and measures

# Inventory System of the European Union



## Reporting by MS (basic elements): Actual progress

By **15<sup>th</sup> of JANUARY** each year (X) MS report:

- anthropogenic greenhouse gas emissions (GHG) (carbon dioxide (CO<sub>2</sub>), methane (CH<sub>4</sub>), nitrous oxide (N<sub>2</sub>O), hydrofluorocarbons (HFCs), perfluorocarbons (PFCs) and sulphur hexafluoride (SF<sub>6</sub>)) for year before last (X-2)
- provisional data on their emissions of CO, SO<sub>2</sub>, NO<sub>x</sub> and VOC during the year before last (X-2) together with final data for the year (X-3)
- anthropogenic GHG emissions by sources and removals by sinks from LULUCF (X-2)
- accounting of emissions and removals from LULUCF activities (1990 to (X-2))
- any changes to the information referred to above relating to the years between 1990 and the year three years previous (year X-3)

- ★ The elements of the national inventory report necessary for the preparation of the EU greenhouse gas inventory report:
  - ⇒ quality assurance/quality control plan,
  - ⇒ a general uncertainty evaluation,
  - ⇒ a general assessment of completeness,
  - ⇒ information on recalculations performed,
  - ⇒ description of institutional arrangements,
  - ⇒ description of methodologies and data sources (Table Annex I Impl. Provisions) ,
  - ⇒ comparison of sectoral and reference approach,
  - ⇒ responses to the UNFCCC review,
  - ⇒ description of past emission trends

## Reporting by MS (basic elements): Actual progress – cont.

- ★ information from the national registry, once established, on the issue, acquisition, holding, transfer, cancellation, withdrawal and carryover of assigned amount units, removal units, emission reduction units and certified emission reductions during the previous year (X-1)
- ★ information on legal entities authorised to participate in mechanisms under Articles 6, 12 and 17 of the Kyoto Protocol, in compliance with relevant national or Community provisions
- ★ steps taken to improve estimates, for example where areas of the inventory have been subject to adjustments
- ★ information on indicators for the year before last (year X- 2) by 15<sup>th</sup> of January
  - ↪ Priority (Table II-1 Annex II),
  - ↪ Additional priority (Table II-2 Annex II)
  - ↪ Supplementary (Table II-3 Annex II)
- ★ any changes to the national inventory system
- ★ By **15<sup>th</sup> of MARCH** complete National Inventory Report

# Important dates

Element	Who	When	What
Submission of GHG inventories by MS under Council Decision No 280/2004/EC	Member States	15 January	Elements listed in Article 3(1) of Decision 280/2004/EC in particular: <ul style="list-style-type: none"> <li>• GHG emissions by for the year <math>n-2</math></li> <li>• Updated time series 1990- year <math>n-3</math>, if relevant.</li> </ul>
'Initial check' of MS submissions	Commission, assisted by the EEA	28 February / 1 April	Initial checks and consistency checks. <ul style="list-style-type: none"> <li>• Comparison of energy data provided by MS on the basis of the IPCC Reference Approach with <u>Eurostat energy data</u></li> </ul>
Circulation of draft EC inventory	Commission, assisted by the EEA	28 February	Circulation of the draft EC inventory on 28 February to Member States.
Submission of updated inventories by MS	Member States	15 March	
Estimates for data missing from a national inventory	Commission, assisted by EEA	31 March	Commission prepares estimates for missing data and communicates these to the MS <ul style="list-style-type: none"> <li>• <u>Eurostat energy data</u> used for CO<sub>2</sub> from energy.</li> </ul>
Comments from MS regarding estimates for missing data	Member States	8 April	Member States provide comments on Commission estimates for missing data.
Final annual EC inventory (incl. Community inventory report)	Commission, assisted by EEA	15 April	<u>Eurostat energy data</u> is used for EC Reference approach
Resubmission EC inventory (incl. inventory report), if needed	Commission, assisted by EEA	27 May	<u>Eurostat energy data</u> is used for EC Reference approach
Commission progress report / EEA GHG Trends and projections report	Commission, assisted by EEA	June – September	Prepare Commission progress report / EEA GHG trends and projections report <ul style="list-style-type: none"> <li>• <u>Eurostat energy data</u> used for analysing trends (electricity data, heating degree data).</li> </ul>
Further QA/QC activities	EEA, MS, Eurostat	June - December	EC internal review

## Reporting by MS (basic elements): Projected progress

By **15th of March** every 2 years (X) MS report (biennial report) on:

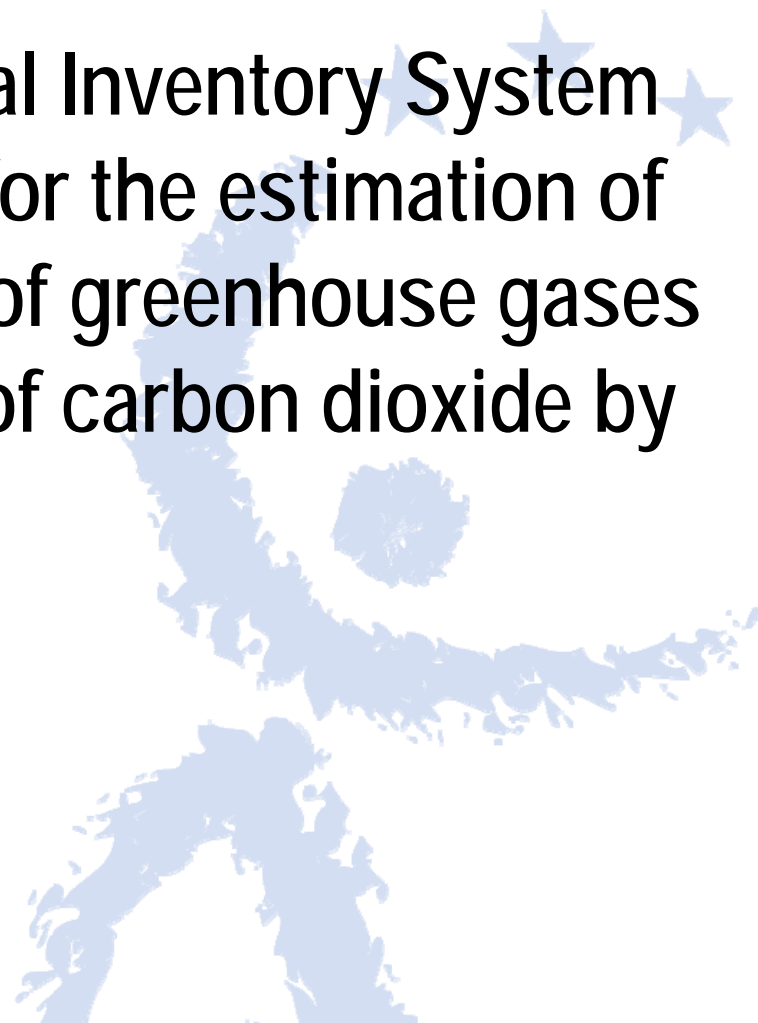
- National policies and measures on a sectoral basis for each GHG
  - Objective of policies and measures, type of policy instrument (interactions)
  - Status of implementation of the policy or measure (expired, repealed)
  - Indicators to monitor and evaluate progress with policies and measures over time
  - Quantitative estimates of the effects of policies and measures on GHG emissions between the base year and subsequent years, including 2005, 2010 and 2015, including their economic impacts to the extent feasible (indicators for projections 2005,2010,2015,2020 Annex III Impl.provisions)
  - Complementarity, Information on domestic action, and the use of Joint Implementation (JI), Clean Development Mechanisms (CDM) and emissions trading (EU ETS)

## Reporting by MS (basic elements): Projected progress – cont.

- ★ The elements of the national inventory report necessary for the preparation of the EU greenhouse gas inventory report:
  - ↪ quality assurance/quality control plan,
  - ↪ a general uncertainty evaluation,
  - ↪ a general assessment of completeness,
  - ↪ information on recalculations performed,
  - ↪ description of institutional arrangements,
  - ↪ description of methodologies and data sources (Table Annex I Impl. Provisions) ,
  - ↪ comparison of sectoral and reference approach,
  - ↪ responses to the UNFCCC review,
  - ↪ description of past emission trends

- ★ MS shall devise and implement National Programs aimed at the:
  - ↳ Limitation and/or reduction of all greenhouse gas emissions under the UNFCCC and the Kyoto Protocol
  - ↳ Transparent and accurate monitoring of the actual and projected progress
- ★ National programs shall include the information on projected progress and shall be updated accordingly
- ★ Use of flexible mechanisms supplemental to domestic action

- ★ Establishment of a National Inventory System under the Kyoto Protocol for the estimation of anthropogenic emissions of greenhouse gases by sources and removals of carbon dioxide by sinks.



## ★ Inventory reports:

- ↪ communicated through Perm. Rep. to Sec. Gen.
- ↪ uploaded on EIONET
- ↪ informally through email
- ↪ reporting tool: CRF reporter

## ★ Projections reports:

- ↪ communicated through Perm. Rep. to Sec. Gen.
- ↪ uploaded on EIONET
- ↪ informally through email



## ★ 3 projects:

↳ Methodologies for projections

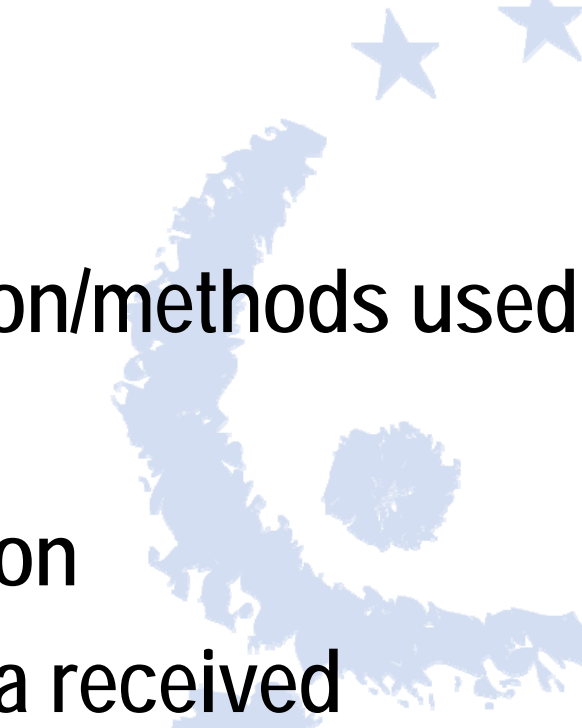
↳ Streamlining AP and CC

↳ Ex-post quantification of PAMs

★ IA: ~mid-2009

★ Legislative proposal: ~2010



- ★ Timeliness of submission
  - ★ Submission process
  - ★ Comparability of information/methods used
  - ★ Coherence of information
  - ★ Gaps in reported information
  - ★ Insufficient analysis of data received
- 

- ★ Timeliness of submission
- ★ Submission process
- ★ Analysis of PAMs
- ★ PAMs reporting
- ★ Connect current and projected emissions
- ★ Connect current emissions and PAMs
- ★ Methods/parameters used for projections
- ★ Consistency with EU ETS and other data reported under AP-related legislation
- ★ Adaptation
- ★ RTD
- ★ Development Cooperation
- ★ Technology



Thank you for your attention!

